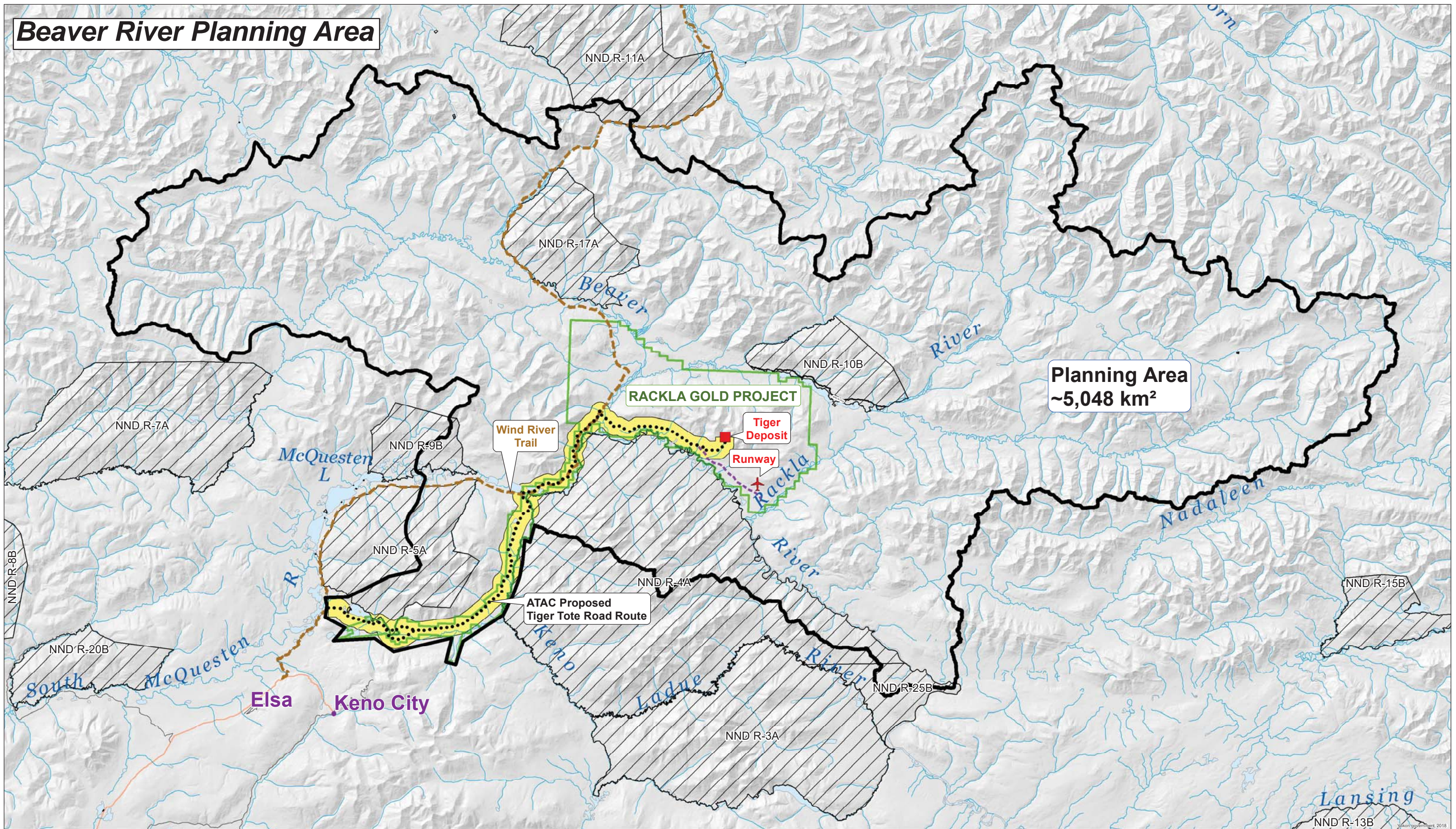
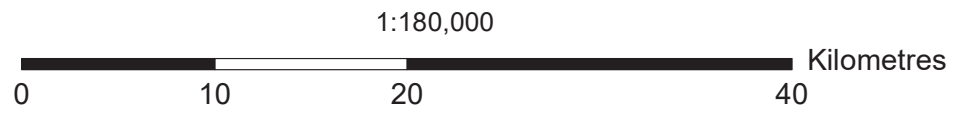


# Beaver River Planning Area



Planning Area  
~5,048 km<sup>2</sup>

-  Runway
-  Tiger Deposit
-  Runway Trail\*
-  Proposed Tote Road
-  Wind River Trail
-  Planning Area
-  Rackla Gold Project
-  Prohibition of Entry Area (2km Road Corridor)
-  First Nation Settlement Lands



M:\02\_ArcGIS\01\_Maps\16\_RLUP\_Regional\_Land\_Use\_Planning\Beaver River Watershed Area Plan - ArchD 17 Oct, 2018



**Yukon**

Created By: CMI (HR)  
 Date: March 2018  
 File: BeaverRiverAreaPlan.mxd  
 Projection: Yukon Albers  
 \*Runway trail digitized from Archer  
 Cathro 'Rau & Tiger Tote Road  
 Exploration Potential' Figure 1  
 July 4, 2016